

## Guide to the New Mexico Political Subdivisions Interactive Web Map

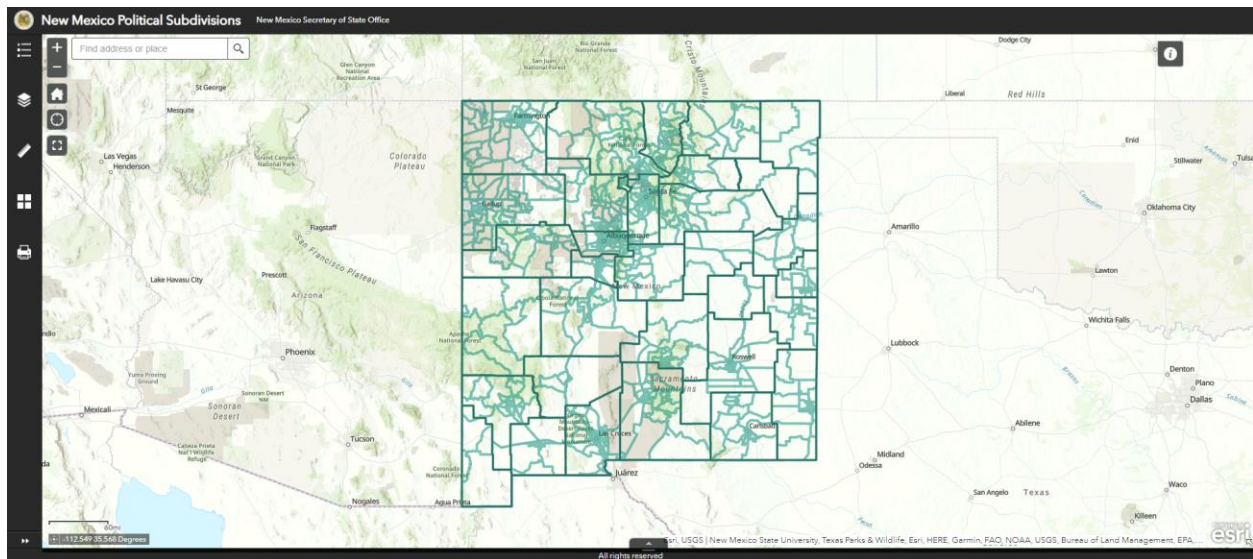
[Access Here](#)

The New Mexico Political Subdivisions Interactive Web Map contains geospatial data of political subdivisions and administrative boundaries of the state of New Mexico. It allows the user to view the following: Federal Congressional Districts, State Senate Districts, State Representative (House) Districts, County Commission Districts, Voting Precincts, City Council/Commission Districts, Community College Districts, Public Education Commission Districts, School Districts, Special Voting Districts, Census Boundaries, and other data. The user can measure distances and areas, change the basemap (map background), and print pdf maps of different sizes and orientations, at their desired scale/extent.

The following guide describes the tools available in the web map.

### Contents

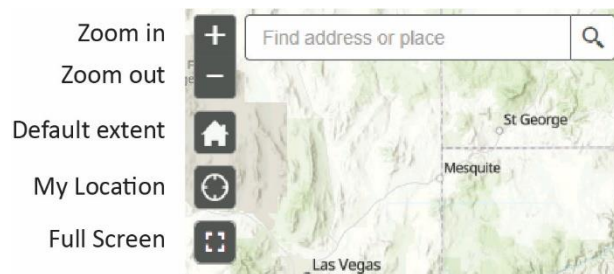
Navigation .....	2
About.....	2
Legend.....	3
Layer List .....	4
Measurement.....	5
Basemap Gallery .....	6
Print.....	6
Pop-up Box.....	8
Attribute Table .....	9



**Figure 1:** Home view

## Navigation

These tools allow the user in navigating the map.

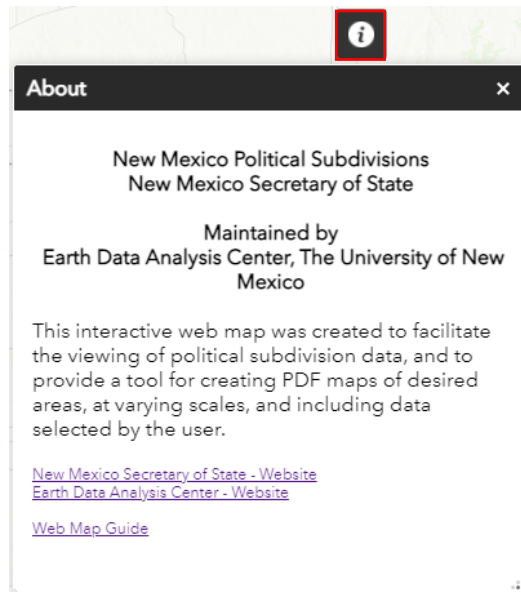


**Figure 2:** Navigation tools

- **Zoom in/ Zoom out:** get closer to certain areas by clicking here, or using the wheel on your mouse.
- **Default extent:** the default extent is a statewide view of New Mexico.
- **My Location:** allows the map to find your current location
- **Full Screen:** opens the map to cover your screen. Click “Esc” to exit Full Screen mode.

## About

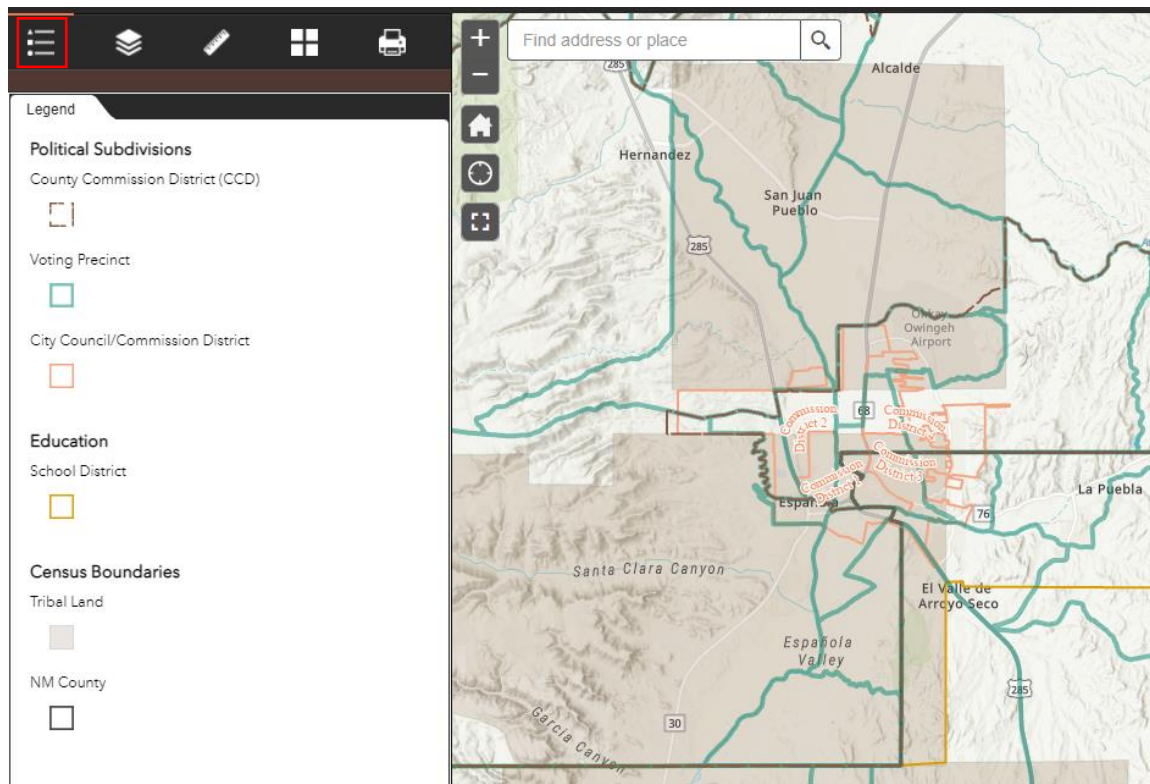
This tool includes a brief description of the web map, links to the New Mexico Secretary of State website and EDAC’s website, and this guide.



**Figure 3:** About window

## Legend

The legend shows the symbology of layer that are currently visible.



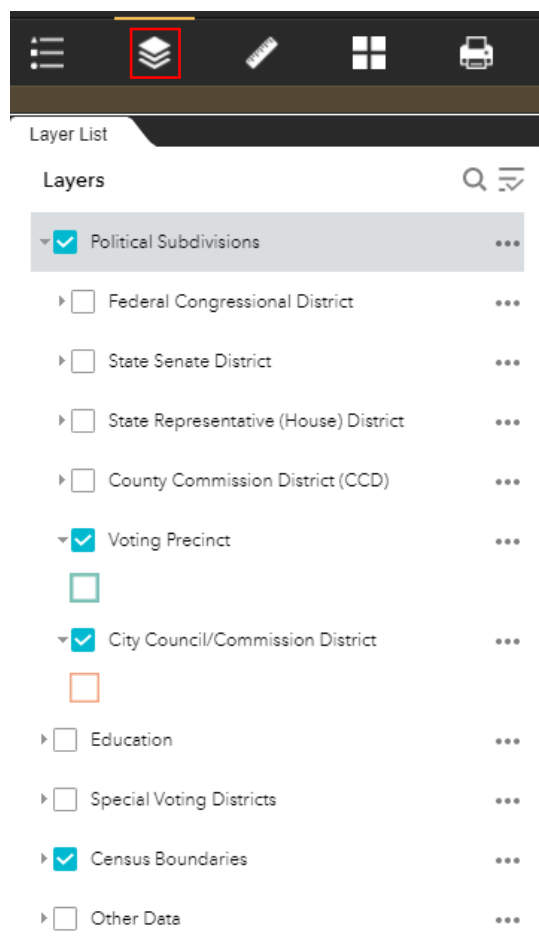
**Figure 4:** Legend window

## Layer List

The list of layers includes political subdivisions and other boundaries, grouped as follows:

- Political Subdivisions
- Education
- Special Voting Districts
- Census Boundaries
- Other Data

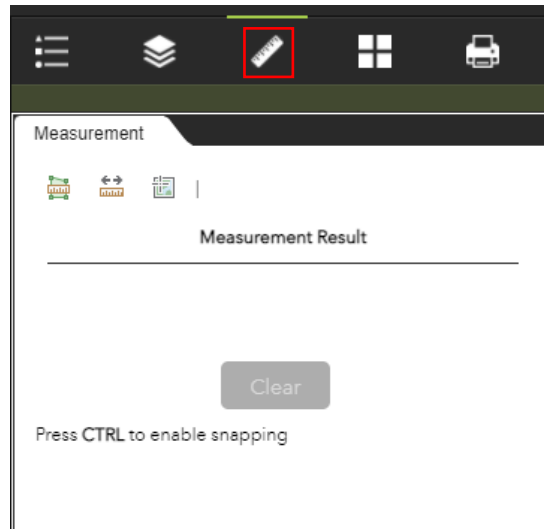
Expand each group and layer by clicking on the downward arrow. Make them visible (turn them on) by clicking on the box next to their name. Use 🔍 to search for a layer name, and ☰ turn on/off and expand/collapse all layers.



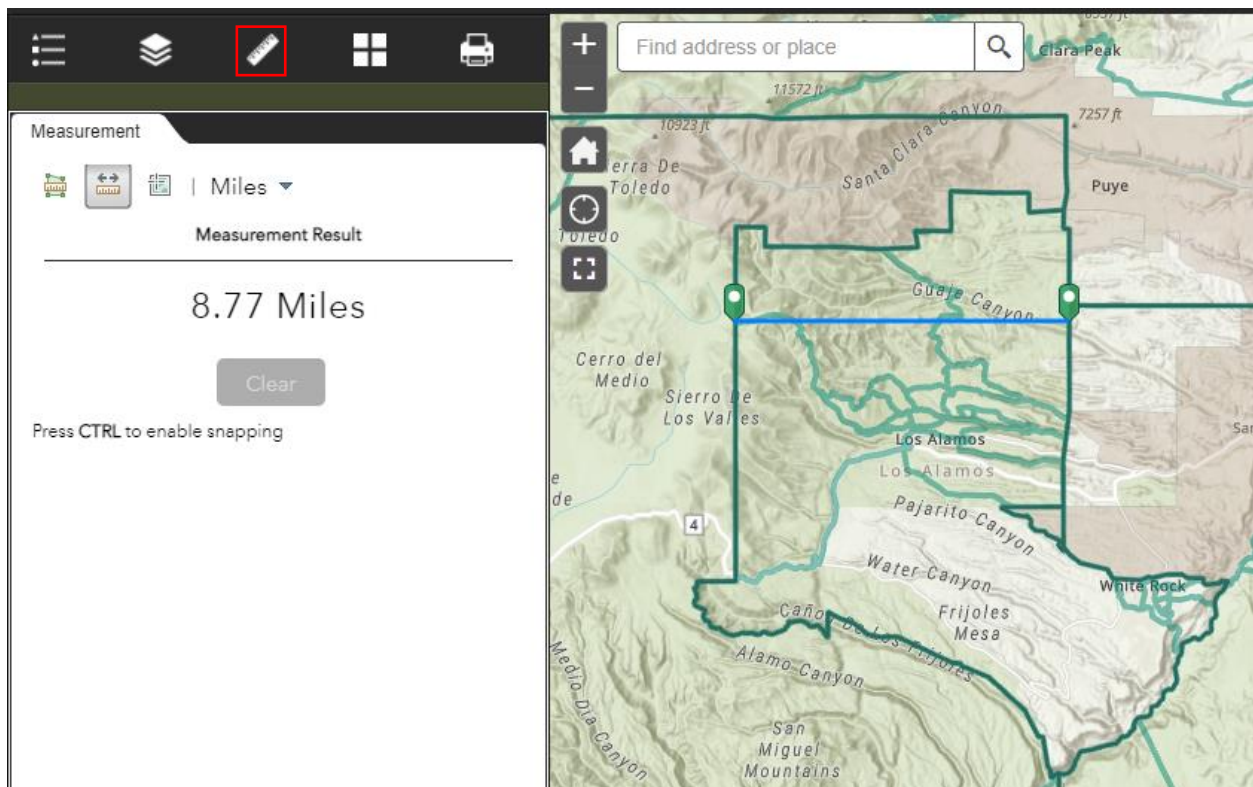
**Figure 5:** Layers List

## Measurement

The measurement tool allows you to measure areas, distances, and returns location coordinates in the desired format. Click “Clear” to start a new measurement, and hold CTRL to enable snapping to feature edges.



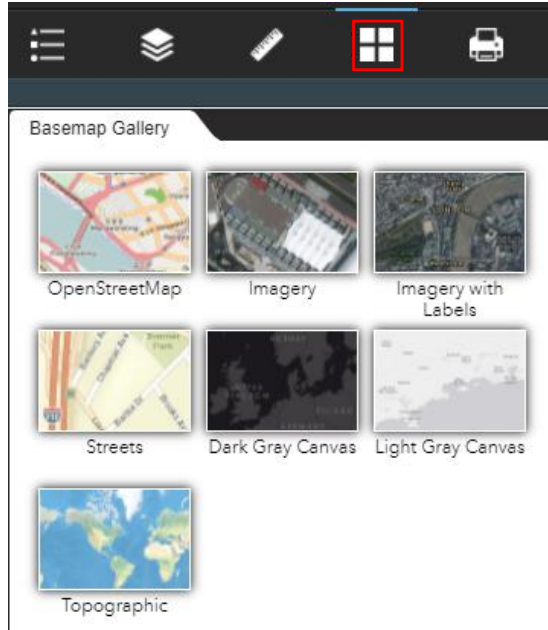
**Figure 6:** Measurement tool



**Figure 7:** Linear distance measurement

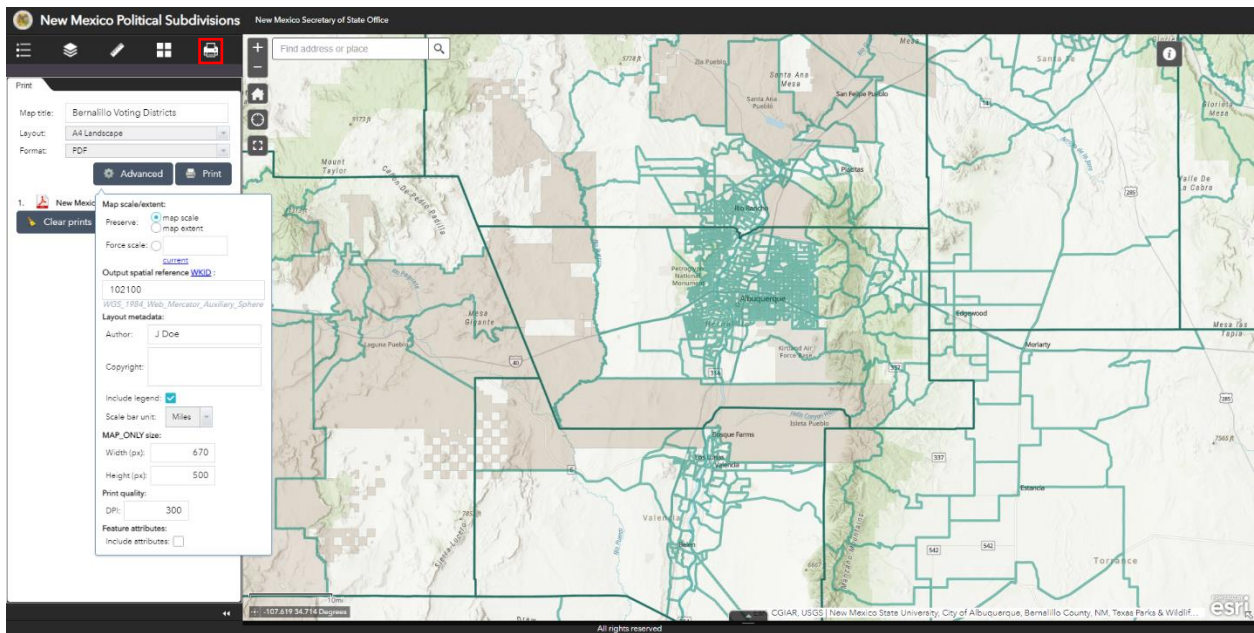
## Basemap Gallery

You can choose the basemap of the map from this gallery, which includes imagery, street maps, topographic map, and gray canvases.



**Figure 8:** Basemap Gallery

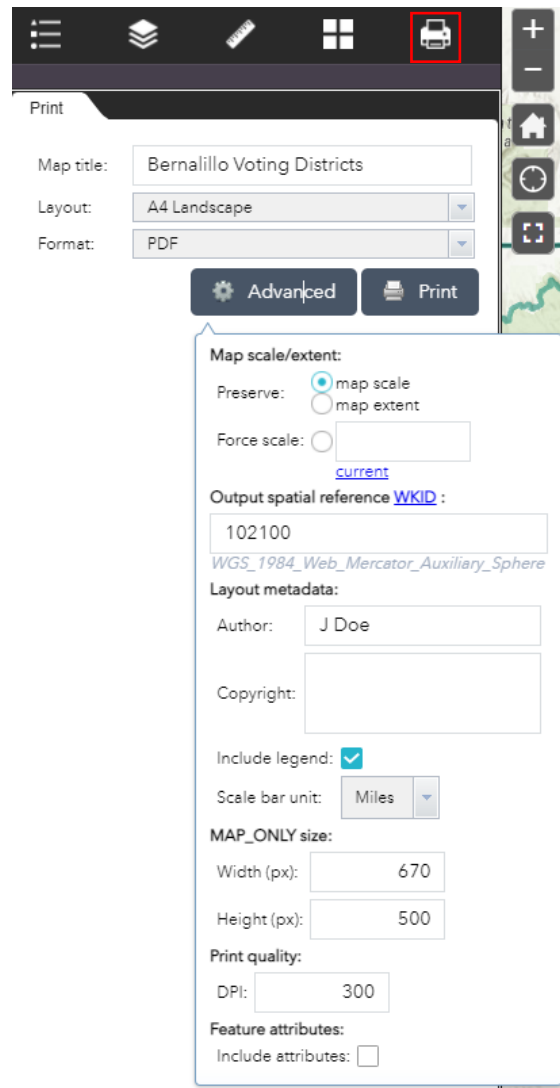
## Print



**Figure 9: Print Tool**

You can create a layout to print in various formats, including PDF:

- Turn visibility on for the layers you would like to show on the “Layer List” tool.
- Center the map on the area that you would like to display. Zoom in/out if needed.
- Click on the “Print” tool, give the map a title, and select the layout (page size and orientation) and format.
- For further customization, click on “Advanced”.
- When ready, click “Print” and the map will open in a new browser window.



Print

Map title: Bernalillo Voting Districts

Layout: A4 Landscape

Format: PDF

Advanced Print

Map scale/extent:

Preserve: ☒ map scale ☐ map extent

Force scale:  [current](#)

Output spatial reference [WKID](#) :

102100

WGS\_1984\_Web\_Mercator\_Auxiliary\_Sphere

Layout metadata:

Author: J Doe

Copyright:

Include legend: ☒

Scale bar unit: Miles

MAP\_ONLY size:

Width (px): 670

Height (px): 500

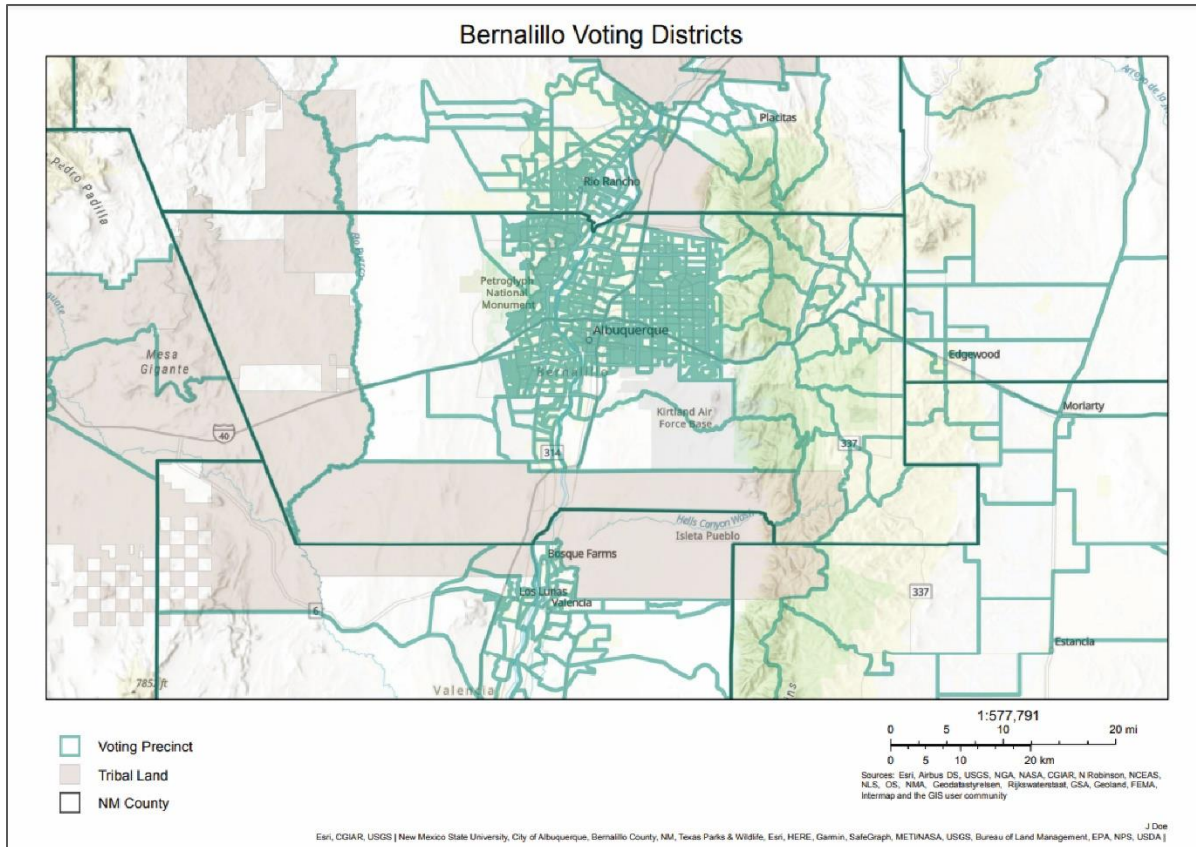
Print quality:

DPI: 300

Feature attributes:

Include attributes: ☐

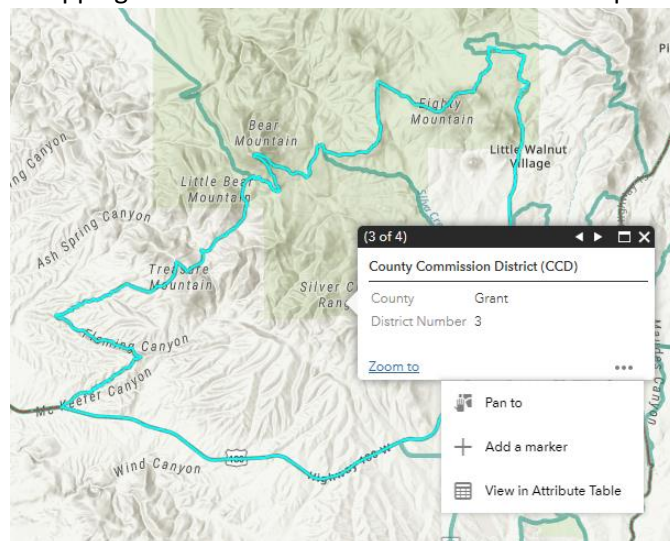
**Figure 10:** Print Tool – Advanced Options



**Figure 11:** Example of a printed pdf map, showing the Voting Precincts of Bernalillo County.

## Pop-up Box

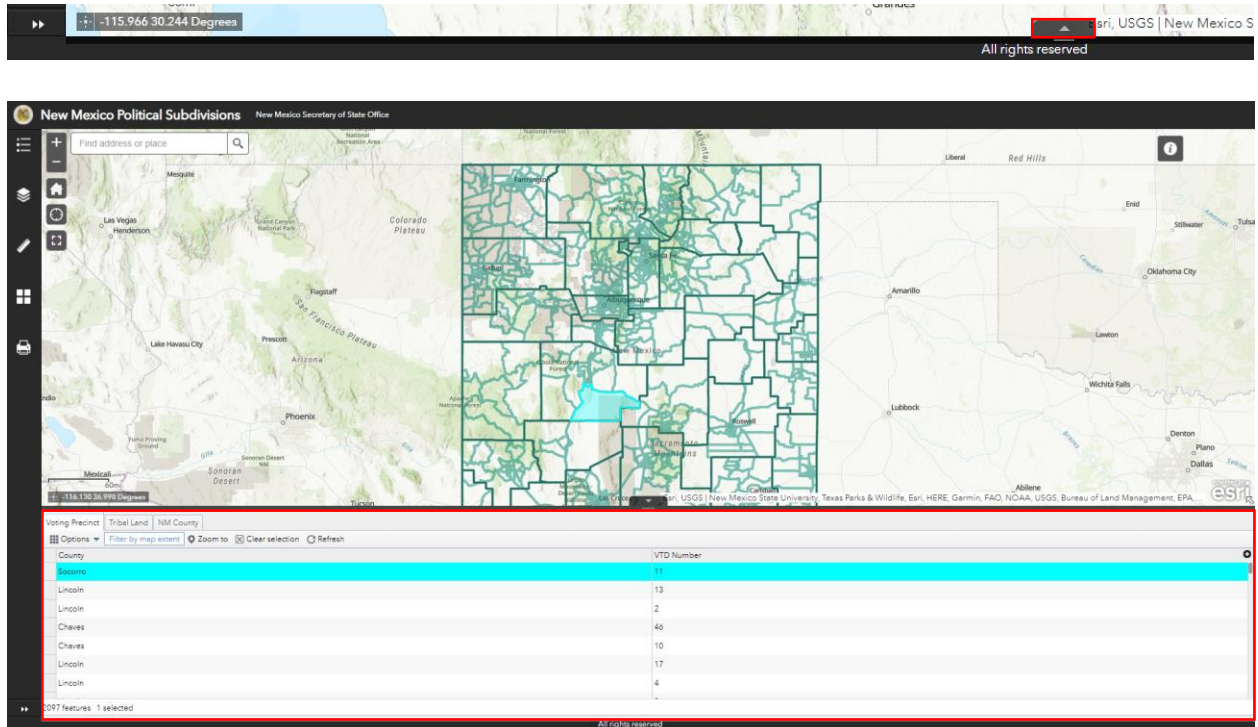
Click on any feature to open a pop-up box with information about them. Use the right arrow to view the attributes of different overlapping features. Click the three dots for more options.



**Figure 12:** Pop-up Window

## Attribute Table

Open the attribute table by clicking on the upward arrow at the bottom of the map window. The window shows the layers that are currently visible. Double-click on a record to zoom into the feature, and vice versa.



**Figure 13:** Attribute Table